

HUNTWOOD STOCK CABINETS



PAINTED

Door Style:
NANTUCKET

Color:
WHITE

standard overlay



BEECH

Door Style:
NANTUCKET

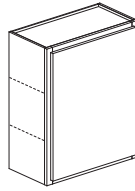
Color:
ARCTIC GREY

standard overlay

PRODUCT LIST

Cabinet sizes shown are in stock and available for immediate purchase, but are not a complete representation of all cabinets. Please see sales associate for availability of cabinets not shown.

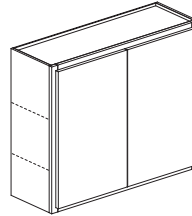
wall



Wall Cabinet, Single Door

W0930-S, W1230-S, W1530-S, W1830-S, W2130-S, W0936-S, W1236-S, W1536-S, W1836-S, W2136-S

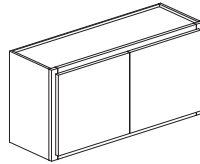
Width: 9", 12", 15", 18", 21"
Height: 30", 36"
Depth: 12"



Wall Cabinet, Split Doors

W2430SP-S, W2730-S, W3030-S, W3630-S, W2436SP-S, W2736-S, W3036-S, W3636-S

Width: 24", 27", 30", 36"
Height: 30", 36"
Depth: 12"

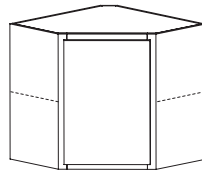


Wall Refrigerator & Hood Cabinet, Split Doors

W3012-S, W3018-S, W3612-S, W3618-S

Width: 30", 36"
Height: 12", 18"
Depth: 12"

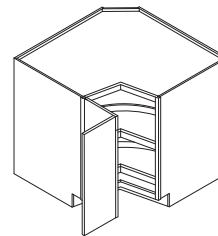
corner



Wall Corner Angle Cabinet, Single Door

WCA2430-S, WCA2436-S

Width: 24"
Height: 30", 36"
Depth: 12"



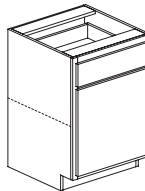
Base High Full Corner Cabinet

BHFC36LS-S

Width: 36"
Height: 34 1/2"
Depth: 24"

base

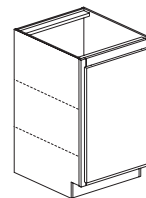
All single door base cabinets are hinged on the left side.



Base Cabinet, Single Door

B12-S, B15-S, B18-S, B21-S

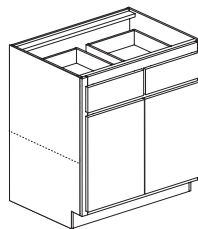
Width: 12", 15", 18", 21"
Height: 34 1/2"
Depth: 24"



Base High Cabinet, Single Door

BH09-S

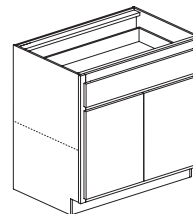
Width: 9"
Height: 34 1/2"
Depth: 24"



Base Drawer Cabinet, Split Doors

B36-S

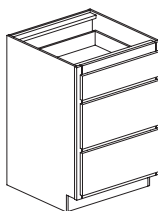
Width: 36"
Height: 34 1/2"
Depth: 24"



Base Wide Cabinet, Split Doors

BW24SP-S, BW27-S, BW30-S

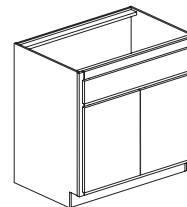
Width: 24", 27", 30"
Height: 34 1/2"
Depth: 24"



Base 3-Drawer Cabinet

B3D15-S, B3D18-S, B3D21-S, B3D24-S, B3D30-S

Width: 15", 18", 21", 24", 30"
Height: 34 1/2"
Depth: 24"

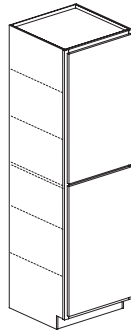


Base Sink Cabinet, Split Doors

BS36-S

Width: 36"
Height: 34 1/2"
Depth: 24"

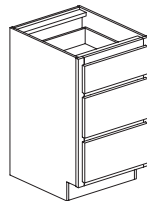
PRODUCT LIST (cont.)



Pantry Cabinet, Single Door

PC1884X24-S, PC1890X24-S,
PC2184X24-S, PC2190X24-S

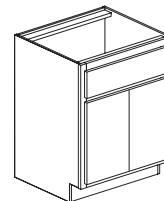
Width: 18", 21"
Height: 84", 90"
Depth: 24"



Vanity 3-Drawer Cabinet

VDBH12-S, VDBH18-S

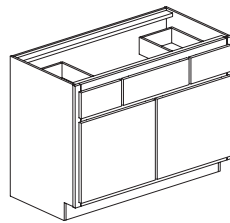
Width: 12", 18"
Height: 34 1/2"
Depth: 21"



Vanity Sink Cabinet, Split Doors

VSBH24SP-S

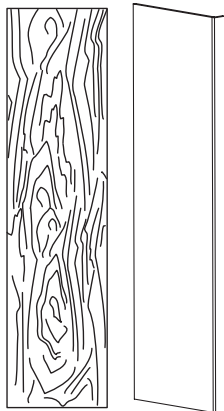
Width: 24"
Height: 34 1/2"
Depth: 21"



Vanity Sink Drawer Cabinet

VSDBH36-S, VSDBH42-S,
VSDBH48-S

Width: 36", 42", 48"
Height: 34 1/2"
Depth: 21"



Pantry Skin

TPW2484-S,
TPW2490-S

Width: 24"
Height: 84", 90"
Thickness: 1/4"

Plain Refrigerator Side Panel

RSP2484-S, RSP2490-S

Width: 3/4"
Height: 84", 90"
Depth: 24 7/8"



Wall Skin

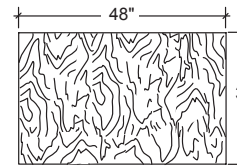
WPW30-S, WPW36-S

Width: 11 11/32"
Height: 30", 36"
Thickness: 1/4"

Refrigerator End Panel

REP1.5X84-S, REP1.5X90-S

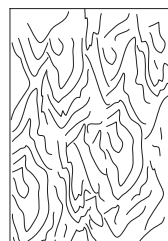
Width: 1 1/2", 3"
Height: 84", 90"
Depth: 24"



Back Panel Skin

BKP4x3x1/2-S

Width: 48"
Height: 34 1/2"
Thickness: 1/2"



Base Skin

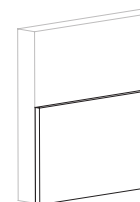
BPW-S

Width: 23 11/32"
Height: 34 1/2"
Thickness: 1/4"

Vanity Skin

VPW-S

Width: 20 11/32"
Height: 34 1/2"
Thickness: 1/4"

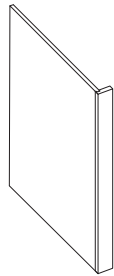


Toekick Skin

WTKS-S

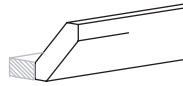
Length: 96"
Height: 4"
Thickness: 1/4"

PRODUCT LIST (cont.)



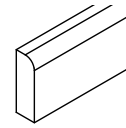
Dishwasher End Panel

DEP3-S
 Width: 3"
 Height: 34 1/2"
 Depth: 24"



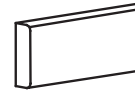
Plain Angled Crown Moulding

CMP8-S
 Height: 2 5/8"
 Depth: 2 5/8"
 Length: 96"



Small Scribe Moulding

SMS8-S
 Height: 3/4"
 Length: 96"
 Thickness: 1/4"



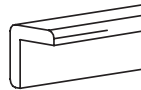
Batten Moulding

BM8-S
 Height: 3/4"
 Length: 96"
 Thickness: 1/4"



Finish Repair Kit

FRK-S



Outside Corner Moulding

OCMH8-S
 Height: 1 1/16"
 Length: 96"
 Thickness: 1 1/16"

3" Filler

F3-31-S
 Width: 3"
 Length: 30 1/2"
 Depth: 3/4"

3" Filler

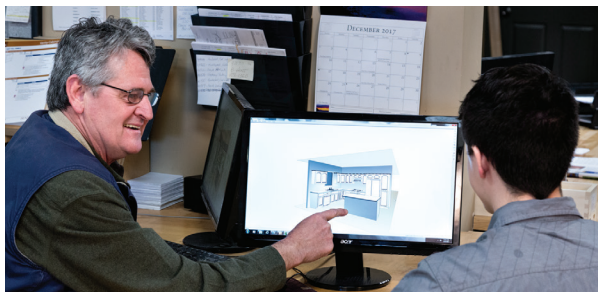
F3-36-S
 Width: 3"
 Length: 36"
 Depth: 3/4"

3" Tall Filler

TF3-96
 Width: 3"
 Length: 96"
 Depth: 3/4"

DESIGN & INSTALLATION SERVICES

Once your floor plan is finished, be sure to take advantage of our free kitchen design services! Our design consultants are seasoned experts who know how to design a kitchen you will love for years to come. An experienced Huntwood kitchen designer will help you avoid common mistakes like; door interference, interrupted traffic patterns



and inadequate countertop space next to cook surfaces, sinks and appliances.

Installing new cabinets, but don't want to do it yourself? Let Huntwood handle your kitchen installation for you! With Huntwood installation, you get:

- Affordable rates
- A single vendor who takes total responsibility for your job
- Experts who know the product well, avoiding costly mistakes and reorders
- Careful notation of any warranty items and same day ordering of replacements
- Cabinets adjusted and touched up upon initial install

HUNTWOOD
 CABINETS

509.924.5858
 23800 E. Appleway Ave.
 Liberty Lake WA 99019

