

PREMIUM STOCK CABINET GUIDE

CHOOSE YOUR CABINET STYLE
MEASURE THE KITCHEN SPACE
PLAN YOUR LAYOUT



HUNTWOOD
CUSTOM CABINETS

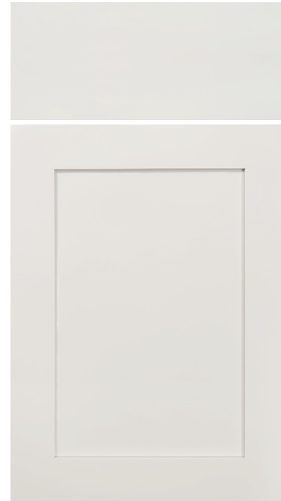
BUY TODAY INSTALL TOMORROW

For over three decades, builders and homeowners have been trusting Huntwood to provide more flexibility, choices and craftsmanship. Every Huntwood cabinet comes standard with: solid wood dovetail drawers; 3/4" hardwood face frames; fully interlocked rabbeted and dadoed construction; steel guides with soft-close; and super-durable melamine interiors. Built to last a lifetime, Huntwood cabinets are backed with one of the industry's most comprehensive Lifetime Limited Warranties.

Huntwood's stock cabinets are the perfect fit for many homeowners and remodelers. And, they are designed so you can install them yourself. Proper space planning and accurate measurements will help streamline the design and installation process. This step-by-step guide will show you how to measure your kitchen cabinets and walk you through the process from start to finish.



CHOOSE YOUR CABINET STYLE

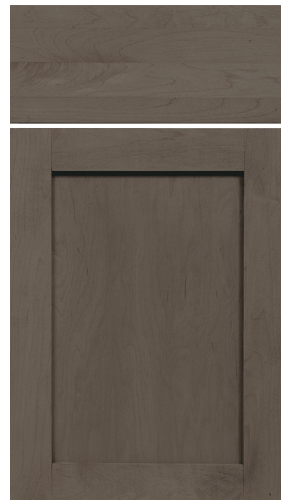


PAINTED

Door Style:
NANTUCKET

Color:
WHITE

Full Overlay



BEECH

Door Style:
NANTUCKET

Color:
ARCTIC
GREY

Full Overlay



IN-STOCK BATHROOM VANITY CABINETS

Available in:
NANTUCKET
WHITE

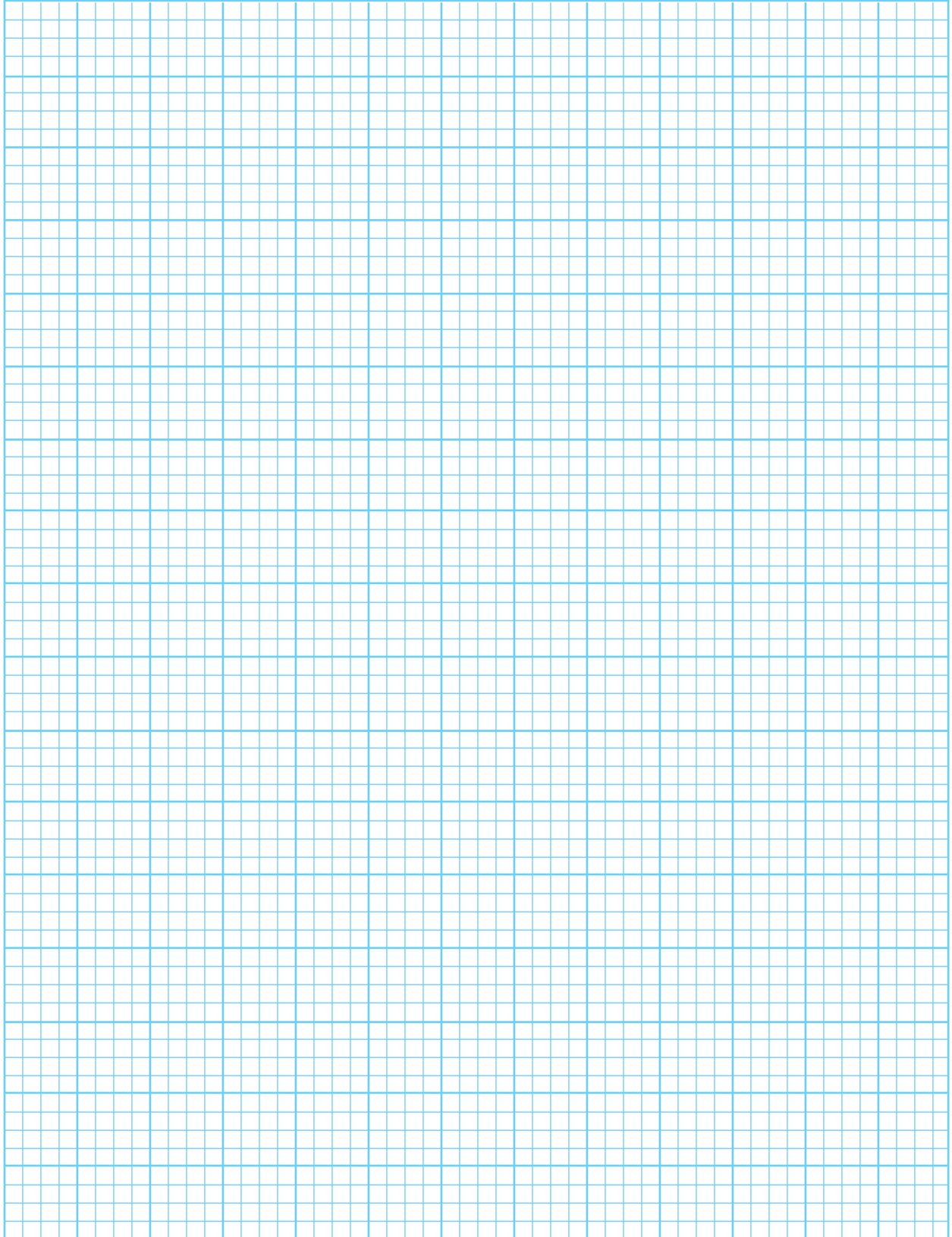
NANTUCKET
ARCTIC GREY

4. Write down vertical measurements, from floor to the windowsill, from windowsill to the top of the window, and from the top of the window to the ceiling. If you have a dropped ceiling or bulkheads, make sure to include those measurements as well.

Appliance Chart

	width	height	depth
Fridge			
Range			
Dishwasher			
Sink			
Microwave			

PLAN YOUR LAYOUT

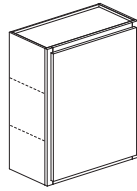


1 square = 3"

PRODUCT LIST

Cabinet sizes shown are in stock and available for immediate purchase, but are not a complete representation of all cabinets. Please see sales associate for availability of cabinets not shown.

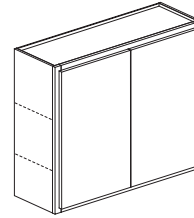
wall



Wall Cabinet, Single Door

W0936, W1236, W1536,
W1836, W2136

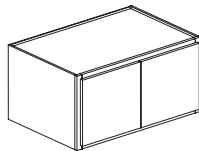
Width: 9", 12", 15", 18", 21"
Height: 36"
Depth: 12"



Wall Cabinet, Split Doors

W2436SP, W2736,
W3036, W3336, W3636

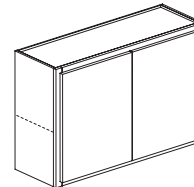
Width: 24", 27", 30", 33", 36"
Height: 36"
Depth: 12"



Wall Refrigerator Cabinet, Split Doors

WR3618X24

Width: 36"
Height: 18"
Depth: 24"

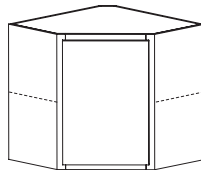


Wall Cabinet, Split Doors

W3018, W3024

Width: 30"
Height: 18, 24"
Depth: 12"

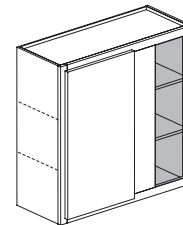
corner



Wall Corner Angle Cabinet, Single Door

WCA2436

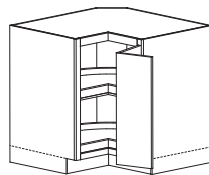
Width: 24"
Height: 36"
Depth: 12"



Wall Blind Corner Cabinet, Single Door

WBC3636

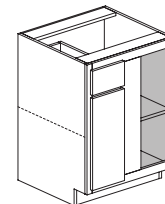
Width: 36"
Height: 36"
Depth: 12"



Base High Full Corner Cabinet

BHFC36, BHFC36LS

Width: 36"
Height: 34 1/2"
Depth: 24"

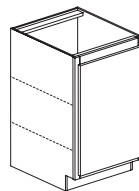


Base Blind Corner Cabinet, Single Door

BBC42

Width: 42"
Height: 34 1/2"
Depth: 24"

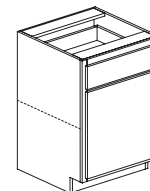
base



Base High Cabinet, Single Door

BH09

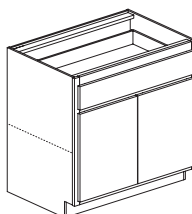
Width: 9"
Height: 34 1/2"
Depth: 24"



Base Cabinet, Single Door

B12, B15, B18, B21

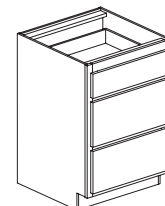
Width: 9", 12", 15", 18", 21"
Height: 34 1/2"
Depth: 24"



Base Wide Cabinet, Split Doors

BW27, BW30, BW33, BW36
BW24SP

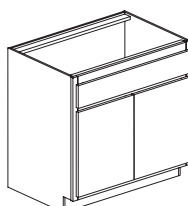
Width: 24", 27", 30", 33", 36"
Height: 34 1/2"
Depth: 24"



Base 3-Drawer Cabinet

B3D12, B3D15, B3D18, B3D21,
B3D24, B3D27, B3D30

Width: 12", 15", 18", 21", 24", 27", 30"
Height: 34 1/2"
Depth: 24"



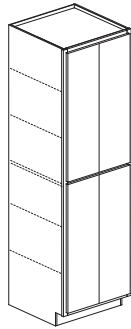
Base Sink Cabinet, Split Doors

BS30, BS33, BS36

Width: 30", 33", 36"
Height: 34 1/2"
Depth: 24"

PRODUCT LIST (cont.)

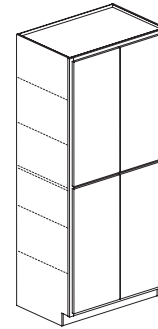
tall



**Pantry Cabinet,
Split Doors**

PC2490X24SP

Width: 24"
Height: 90"
Depth: 24"

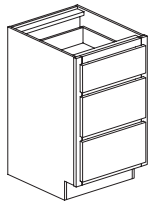


**Pantry Cabinet,
Split Doors**

PC3090X24

Width: 30"
Height: 90"
Depth: 24"

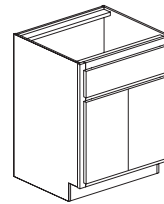
vanity



**Vanity 3-Drawer
Cabinet**

**VDBH12, VDBH15,
VDBH18, VDBH24**

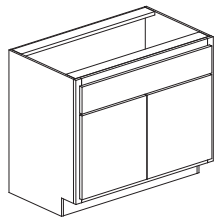
Width: 12", 15", 18", 24"
Height: 34 1/2"
Depth: 21"



**Vanity Sink Cabinet,
Split Doors**

VSBH24SP

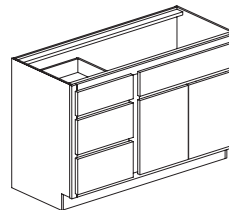
Width: 24"
Height: 34 1/2"
Depth: 21"



**Vanity Sink Cabinet,
Split Doors**

VSBH30

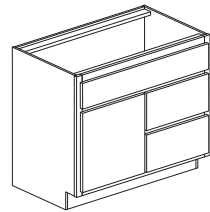
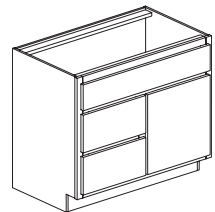
Width: 30"
Height: 34 1/2"
Depth: 21"



**Vanity Combo Drawer
Cabinet, Split Doors**

VCDBH48

Width: 48"
Height: 34 1/2"
Depth: 21"

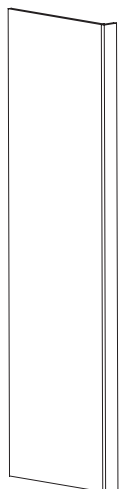


**Vanity Sink
Combo Cabinet**

VSCBH36

Width: 36"
Height: 34 1/2"
Depth: 21"

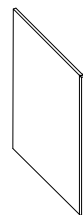
end
panels



**Plain Refrigerator
End Panel**

REP1.5x90

Width: 1 1/2"
Height: 90"
Depth: 24"



**Plain Dishwasher
End Panel**

DEP1.5

Width: 1 1/2"
Height: 34 1/2"
Depth: 24"

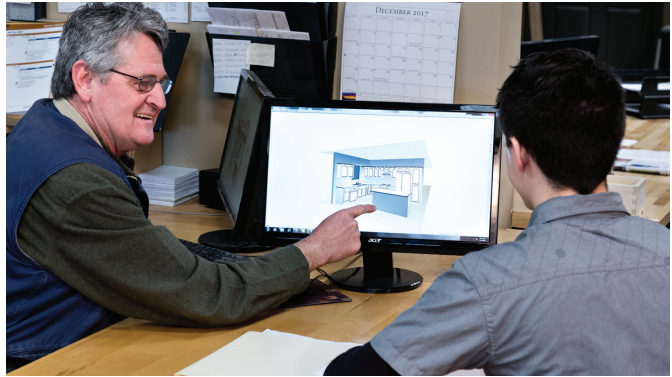
NOTE:

* Delivery not available on stock cabinetry.

* Once purchased, cabinets cannot be stored in warehouse.

DESIGN & INSTALLATION SERVICES

Once your floor plan is finished, be sure to take advantage of our free kitchen design services! Our design consultants are seasoned experts who know how to design a kitchen you will love for years to come. An experienced Huntwood kitchen designer will help you avoid common mistakes like; door interference, interrupted traffic patterns and inadequate countertop space next to cook surfaces, sinks and appliances.



BUILT TO A HIGHER STANDARD

NDure Melamine® Interior

The industry's best cabinet interior. High scratch, heat and water resistance.



3/4" Adjustable Shelves

Full-depth 3/4" shelves supported by adjustable steel shelf pins.

3/4" Hardwood Face Frame

Joints fully glued and secured by angle-drilled locking screws.



106° Concealed Hinges

Wide access and 6-way adjustable with Soft-Close.

Dovetail Drawers

Strong solid wood drawers with permanent bumper pads.



Strong Sides and Back

Box is fully interlocked and rabbeted together. Stabilizer and bottom are dadoed.

Concealed Guides

Reinforced steel guides are smooth operating, self-aligning and feature Soft-Close.



Lasting Touch™ Finish

12-step conversion varnish process is the toughest finish in the industry.

HUNTWOOD
CUSTOM CABINETS

253.301.0729

4425 100th St SW
Bldg 25, Suite K
Lakewood, WA 98499

